



THE DUAL THREAT



THE DUAL THREAT Model number: 37FAC28443BH15

3 beds • 2 baths • 1232 sq.ft. • 28' width • 44' depth

Our home building facilities invest in continuous product and process improvements. Plans, dimensions, features, materials, specifications and availability are subject to change without notice or obligation. Renderings and floor plans are representative likenesses of our homes and may differ from the actual homes. We invite you to tour a Home Center near you and inspect the highest value in quality housing available or call (985) 542-0036 to speak with a Home Consultant. Copyright 2017, CMH. All rights reserved.

<https://www.claytonhammond.com>

CLAYTON HOMES- HAMMOND

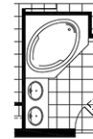
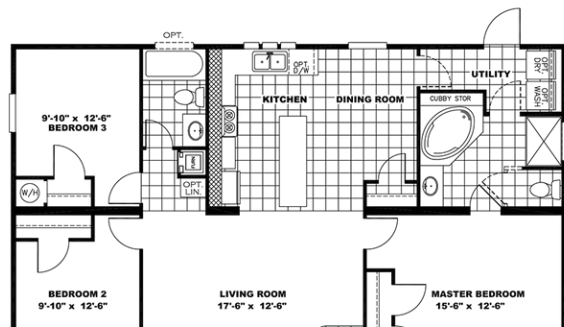
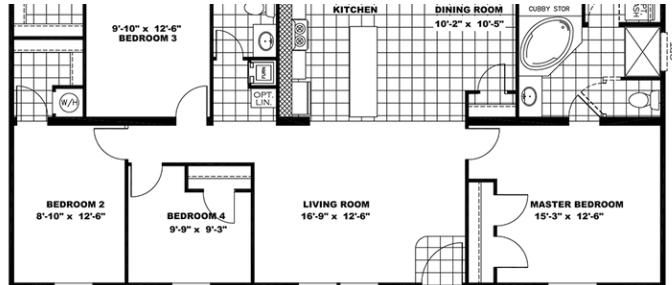
42330 S MORRISON BLVD
HAMMOND, LA 70403

Monday - Thursday: 9am - 7pm
Friday: 9am - 6pm
Saturday: 9am - 5pm
Sunday: Closed

(985) 542-0036



THE DUAL THREAT



THE DUAL THREAT Model number: 37FAC28443BH15

3 beds • 2 baths • 1232 sq.ft. • 28' width • 44' depth

Our home building facilities invest in continuous product and process improvements. Plans, dimensions, features, materials, specifications and availability are subject to change without notice or obligation. Renderings and floor plans are representative likenesses of our homes and may differ from the actual homes. We invite you to tour a Home Center near you and inspect the highest value in quality housing available or call (985) 542-0036 to speak with a Home Consultant. Copyright 2017, CMH. All rights reserved.

<https://www.claytonhammond.com>

CLAYTON HOMES- HAMMOND

42330 S MORRISON BLVD
HAMMOND, LA 70403

Monday - Thursday: 9am - 7pm
Friday: 9am - 6pm
Saturday: 9am - 5pm
Sunday: Closed

(985) 542-0036